

GRIFF

ROAD | GRIFF



The Griff luminaire is intended for road lighting. It comes in 2 sizes S and L, elongated trapezoidal shaped, it has fins on the top. It is entirely made of aluminum and its optical unit is protected by a screen-printed glass. Griff receive 8 to 64 LEDs depending on the size and allows, via a wide range of color temperatures and photometries, to precisely meet the lighting needs of the project while ensuring compliance with the regulations against light pollution. Totally IP66, it is fixed laterally on a wall, a mast or a console or at the top of a mast. Griff is available in 1 or 2 lights.



www.ragni.com



▶ IP66 double compartment.

▶ Available in 2 sizes.

▶ Thermal regulation through a radiator integrated in the luminaire.

Zhaga
standard



*Regulation specific to France: Decree of 27/12/2018 relating to the prevention, reduction and limitation of light nuisance: product configuration to be defined according to the nature of the project.

14/01/2022 - All informations are subject to change without notice.

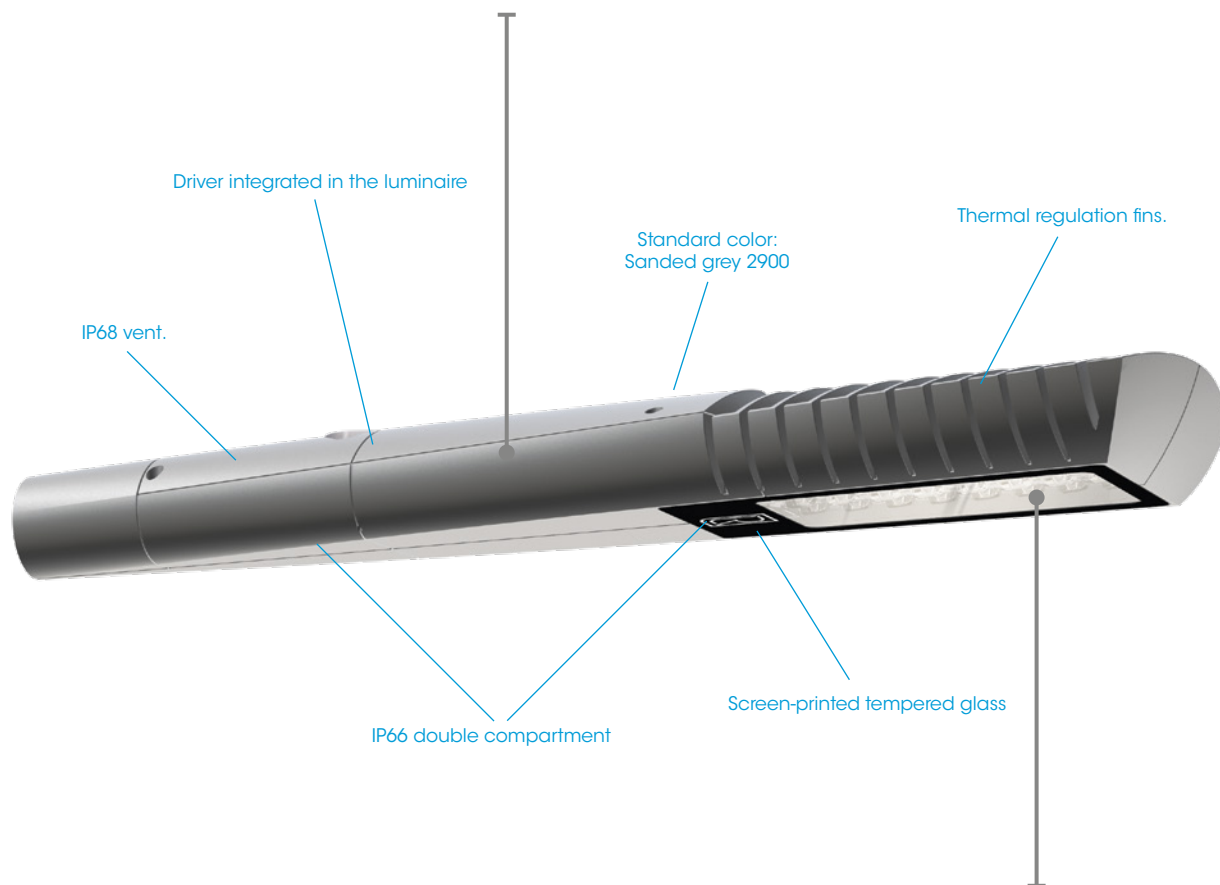


GRIFF S

LUMINAIRE'S SPECIFICATIONS

Luminaire's body

Weight	5 kg
Aerodynamic coefficient (CxS)	0.026 m ²
Protection index	IP66
Materials	Aluminium



Optical unit & control gear

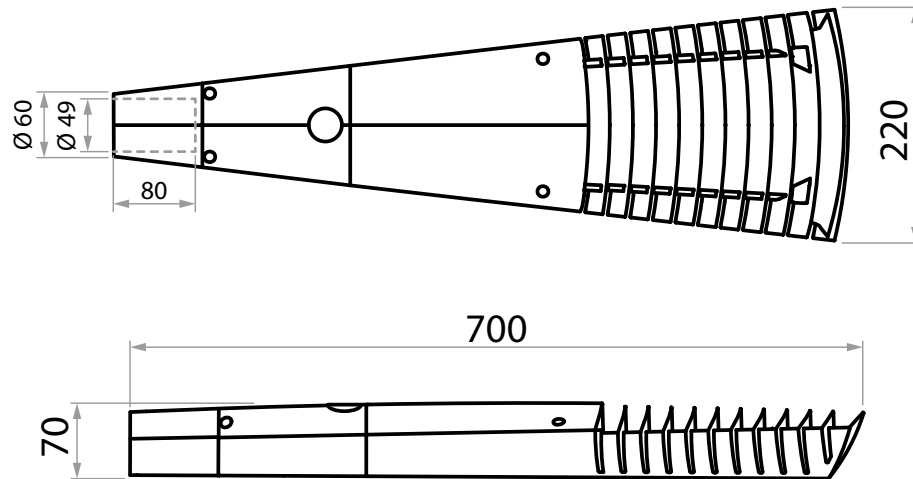
8 to 32 LED PCB in Zhaga standard - From 1000 to 10000 lm (see attached Griff S datasheet for details on power, light intensity and photometry available). Integrated smart driver (control, automatic adjustment, CLO, graduation via voltage variation or DALI). ULR 0% (ULR: Upward Light Ratio).

Materials	Tempered glass
Electric class	I and II
Protection index	IP66
Shock resistance	IK08

Operating temperature: -40°C to +35°C (up to +50° under conditions).

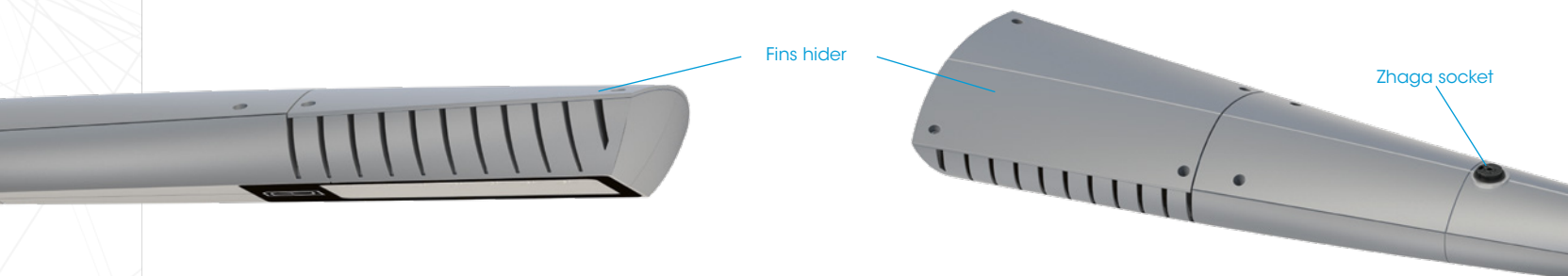
14/01/202 - All informations are subject to change without notice.

Dimensions (mm)



Options

- Pre-wiring.
- Surge protector.
- Zhaga or Nema socket on top of the luminaire to connect OLC or photocell. Zhaga socket at the bottom of the luminaire to add accessories such as sensors.
- Backlight control.
- NTC sensor.
- Automatic disconnection when the luminaire is opened.
- Fins hider.



Ecodesign

Luminaire designed in compliance with the environmental criteria of energy efficiency, recyclability and interoperability.

Associate member of the Zhaga consortium, Ragni integrates electronic elements in this product that comply with the Zhaga standard, which ensures its scalability and interoperability.

Member of the Global Compact since 2018, Ragni is committed to working towards the 17 Sustainable Development Goals (SDG 11, 12, 13, 15).

Luminaire guaranteed free of hazardous substances.

Luminaire eligible for the energy savings certificate.

Luminaire compliant with the decree of 27/12/2018 on the prevention, reduction and limitation of light pollution: product configuration to be defined according to the nature of the project.



Applicable standards

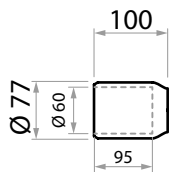
IEC/EN 60598-1 / IEC/EN 60598-2-3 / NF EN 60529 / NF EN 62262 / IEC/EN 55015 / IEC/EN 61547 / IEC/EN 61000-3.2 / IEC/EN 61000-3.3 / IEC/EN 62493 / IEC/EN 62031 / IEC/EN 62471 / IEC/EN 61347-1 / IEC/EN 61347-2-13 / NF EN 13201-3 / NF EN 13201-4 / EN 13032-1+A1 & EN 13032-4 / LM79 / NF EN 12981

14/01/202 - All informations are subject to change without notice.

GRIFFS

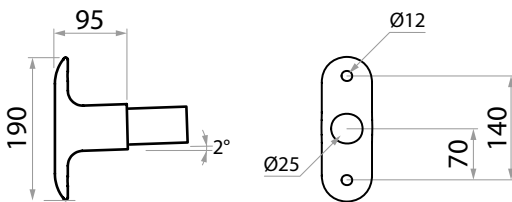
VARIATIONS

Sleeve for Ø60 bracket



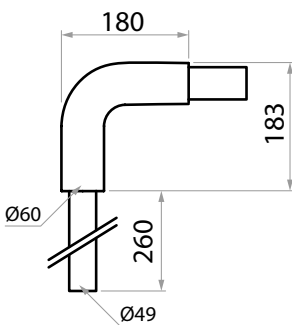
Weight	5.5 kg
C_xS	0.026 m ²

Wall mounted or against a pole



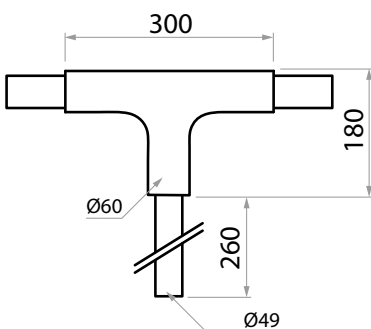
Weight	6 kg
C_xS	0.030 m ²

Top mounted 1 light



Weight	7 kg
C_xS	0.039 m ²

Top mounted 2 lights



Weight	13 kg
C_xS	0.065 m ²

14/01/202 - All informations are subject to change without notice.



GRIFF L

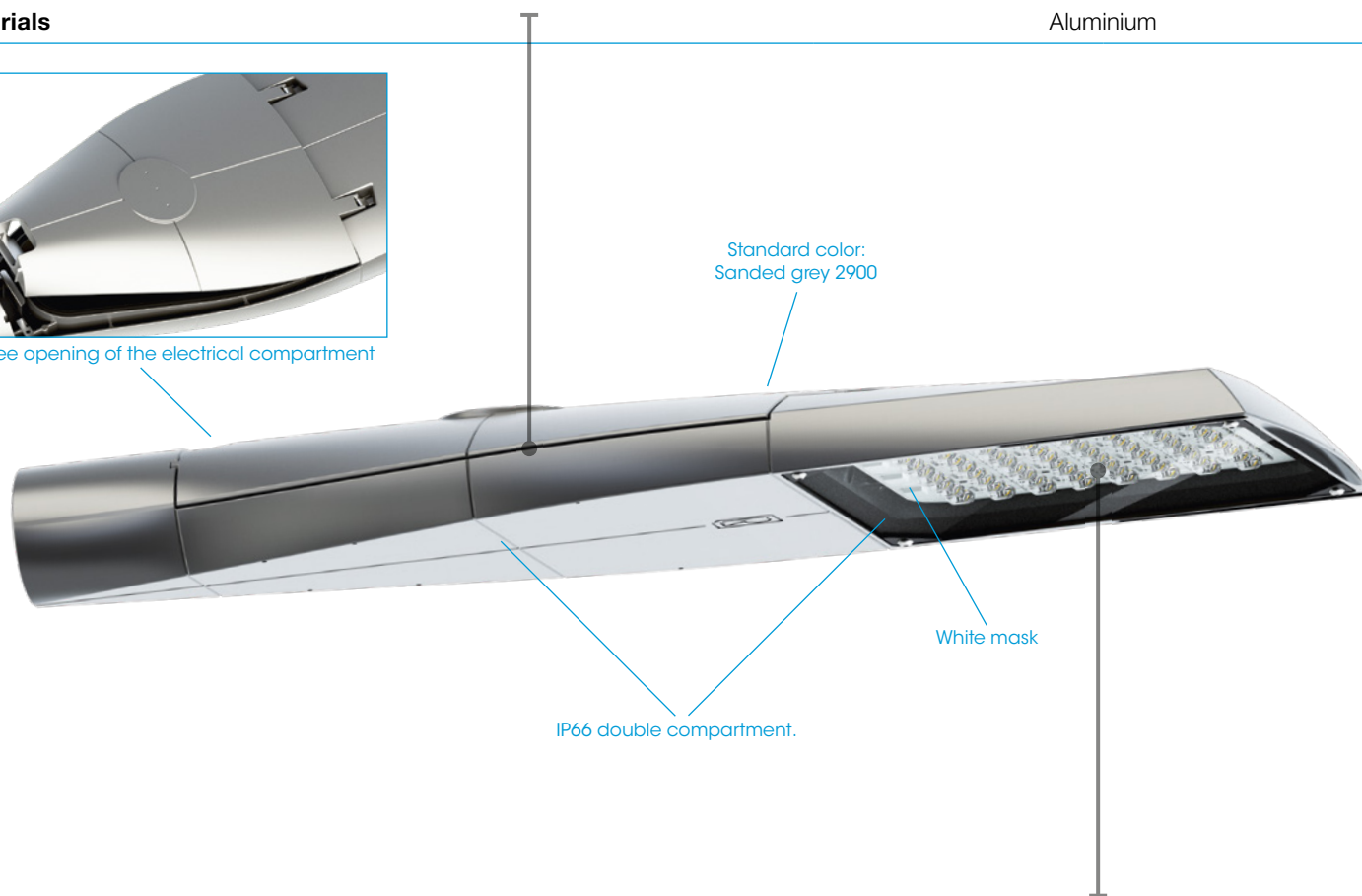
LUMINAIRE'S SPECIFICATIONS

Luminaire's body

	Side mounted	Top mounted
Weight	10 kg	12 kg
Aerodynamic coefficient (C_xS)	0.032 m ²	0.044 m ²
Protection index	IP66	
Materials	Aluminium	



Tool-free opening of the electrical compartment



Optical unit & control gear

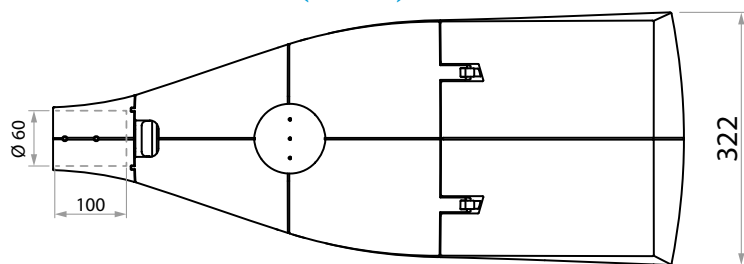
32 to 64 LED PCB in Zhaga standard - From 3100 to 22700 lm. Integrated smart driver (control, automatic adjustment, CLO, graduation via voltage variation or DALI). ULR 0% (ULR: Upward Light Ratio).

Materials	Tempered glass
Electric class	I and II
Protection index	IP66
Shock resistance	IK09

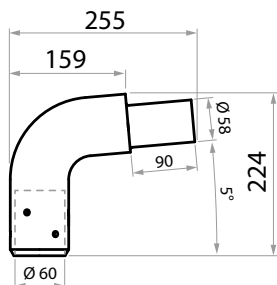
Operating temperature: -40°C to +35°C (up to +50° under conditions).

14/01/202 - All informations are subject to change without notice.

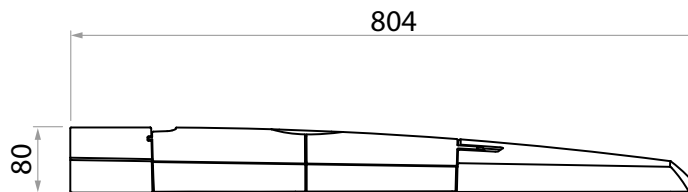
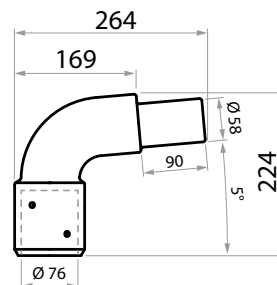
DIMENSIONS (mm)



Ø60 Top mounted spigot

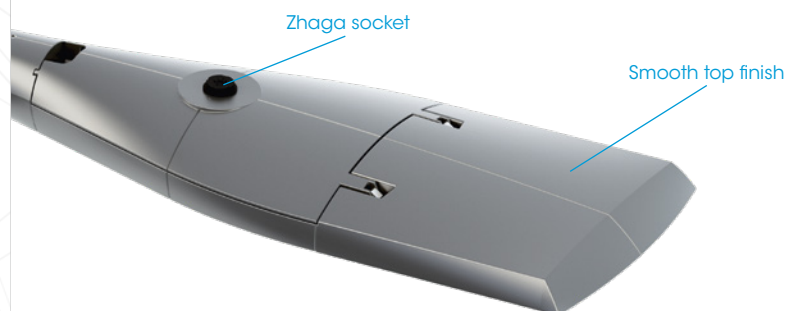


Ø76 Top mounted spigot



Options

- Pre-wiring.
- Surge protector.
- Zhaga or Nema socket on top of the luminaire to connect OLC or photocell. Zhaga socket at the bottom of the luminaire to add accessories such as sensors.
- Ø34/42/48 with reducing wedge.
- Backlight control.
- NTC sensor.
- Automatic disconnection when the luminaire is opened.
- IK10 protection.
- Crutch for opening.



Ecodesign

Luminaire designed in compliance with the environmental criteria of energy efficiency, recyclability and interoperability.

Associate member of the Zhaga consortium, Ragni integrates electronic elements in this product that comply with the Zhaga standard, which ensures its scalability and interoperability.

Member of the Global Compact since 2018, Ragni is committed to working towards the 17 Sustainable Development Goals (SDG 11, 12, 13, 15).

Luminaire guaranteed free of hazardous substances.

Luminaire eligible for the energy savings certificate.

Luminaire compliant with the decree of 27/12/2018 on the prevention, reduction and limitation of light pollution: product configuration to be defined according to the nature of the project.



Applicable standards

IEC/EN 60598-1 / IEC/EN 60598-2-3 / NF EN 60529 / NF EN 62262 / IEC/EN 55015 / IEC/EN 61547 / IEC/EN 61000-3.2 / IEC/EN 61000-3.3 / IEC/EN 62493 / IEC/EN 62031 / IEC/EN 62471 / IEC/EN 61347-1 / IEC/EN 61347-2-13 / NF EN 13201-3 / NF EN 13201-4 / EN 13032-1+A1 & EN 13032-4 / LM79 / NF EN 12981

14/01/202 - All informations are subject to change without notice.

Sets proposals

- **Standard color:** Sanded grey 2900.
- **Option:** other colors on request.

ROAD | GRIFF

9m

A | GRIFF L - KAÏROS
wall-mounted

6m

B | GRIFF S
wall-mounted

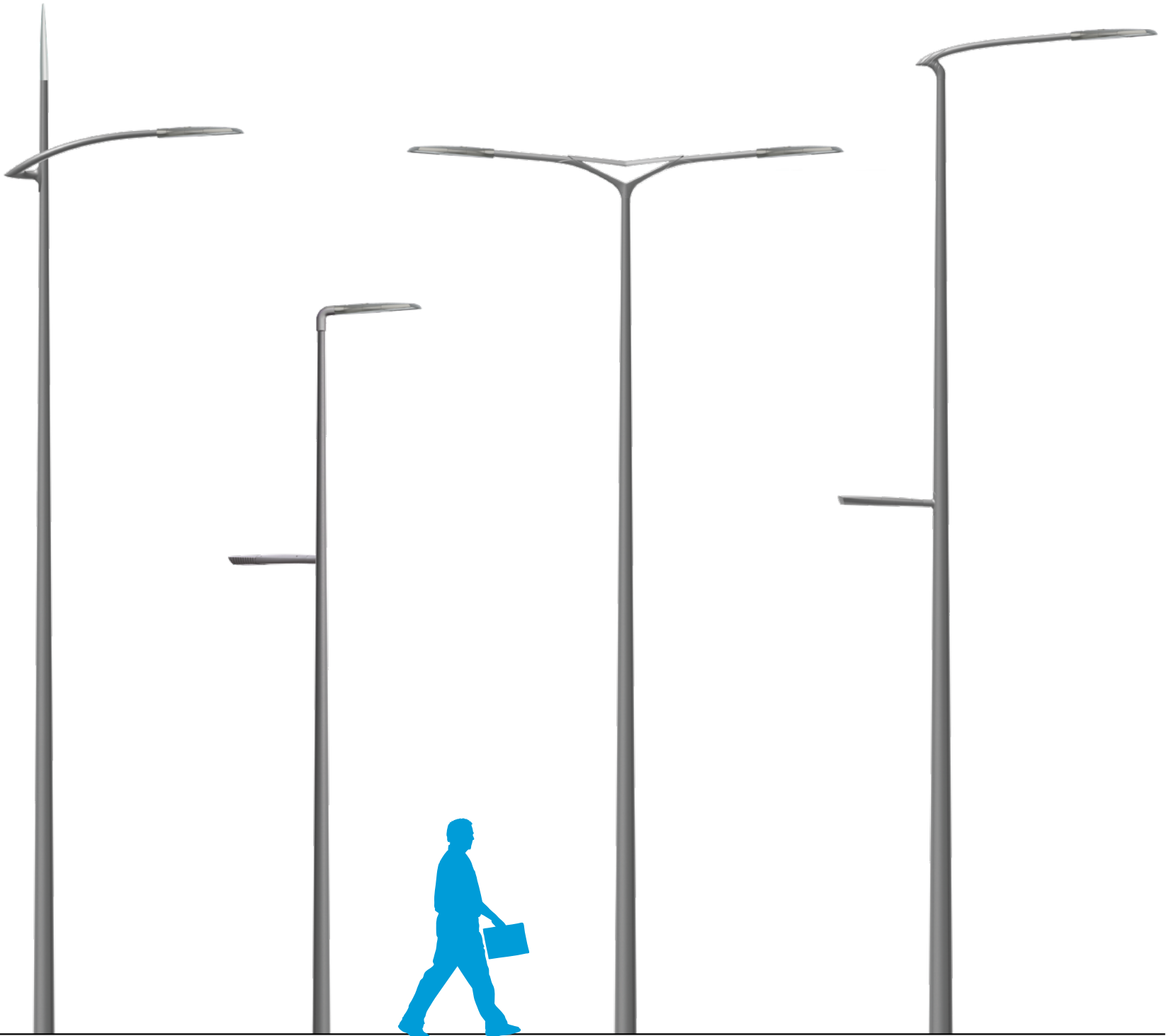
3m

C | GRIFF S
JIMA 350

D | GRIFF S x2
JIMA 500

E | GRIFF S Top-
mounted 2 lights
JIMA 400

GRIFF



F | GRIFF L - SWING 100
KIMA 800

G | GRIFF L en top
GRIFF S against a pole -
JIMA 600

H | GRIFF L - KAÏROS 120
KIMA 700

I | GRIFF L - EXIS 120
GRIFF S against a pole -
JIMA 800

ROAD | GRIFF