

NIGHT LOUNGE

Lighting Designer Roger Narboni
Designer Gaïa Lemmens



RAGNI
GROUPE RAGNI

NIGHT LOUNGE



www.ragni.com



As cities are growing and changing all the time, we need to be constantly creative. That's why we've designed the Night Lounge, a new and unique lighting concept that gives rise to places to live and meet.

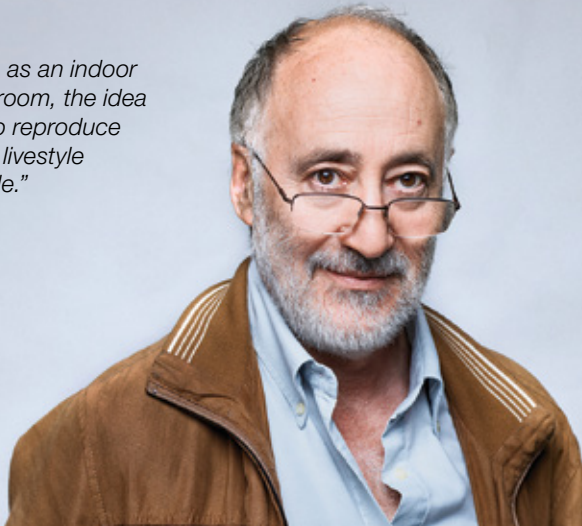
Its design invites you to relax and break the visual monotony of the regular alignment of mast.

These disruptive three-dimensional structures act as catalysts for social moment. Thanks to its almost infinite modularity, it can be adapted to environments and recreate the warm ambience of an open-air indoor space.

Collaboration between
GROUPE RAGNI,
Lighting Designer
Roger Narboni
and the Designer
Gaia Lemmens



"Such as an indoor living room, the idea was to reproduce home lifestyle outside."

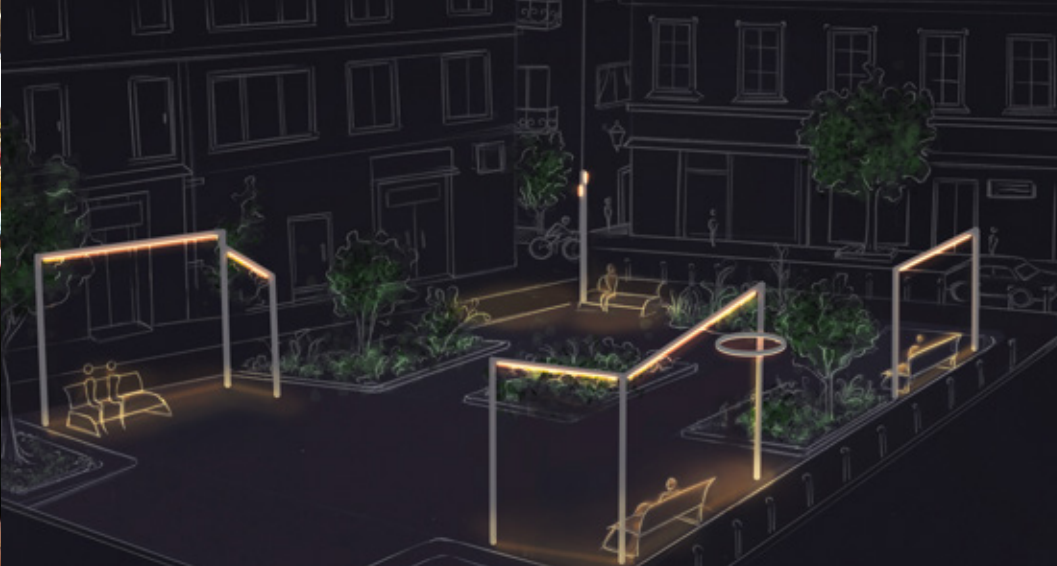


"I had the pleasure to work on this project, which aims to reimagine the place of light in the public spaces."



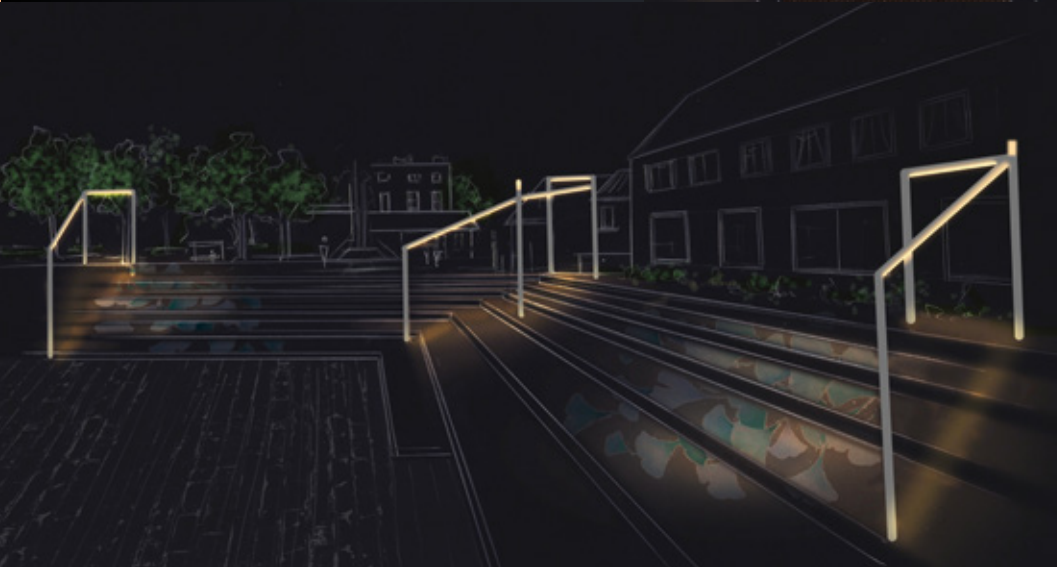
President of Concepto created in Paris in 1988 and "Association des concepteurs lumière et éclairagistes" (ACE) in 1995, Roger Narboni is a lighting designer. He has created over 300 lighting projects for monument illuminations and landscapes in France and abroad, and initiated urban lighting design in 1987.

With the collaboration of Gaia Lemmens, a passionate designer aiming to integrate sustainability, innovation and creativity, she specialises in the design of urban furniture and lighting solution among other things. They designed the Night Lounge with GROUPE RAGNI.



At a time when switching off public lighting is becoming a major issue, our Night Lounge bring warm oases to the heart of the city. On ephemeral terraces, in the middle of parks and gardens, or in lively squares, our Night Lounge create warm spaces for the community.

As real catalysts of social interaction, Night Lounge is going beyond illumination. It is creating a feeling of safety and well-being by allowing citizens to meet up in a friendly and peaceful environment with a respectful and sustainable lighting.



With its almost infinite modularity, its aesthetic design and its lighting atmosphere that can be controlled by users according to their mood, Night Lounge can be adapted to any type of environment and provide dedicated atmospheres. This future-proof and evolving structure is a unique concept.

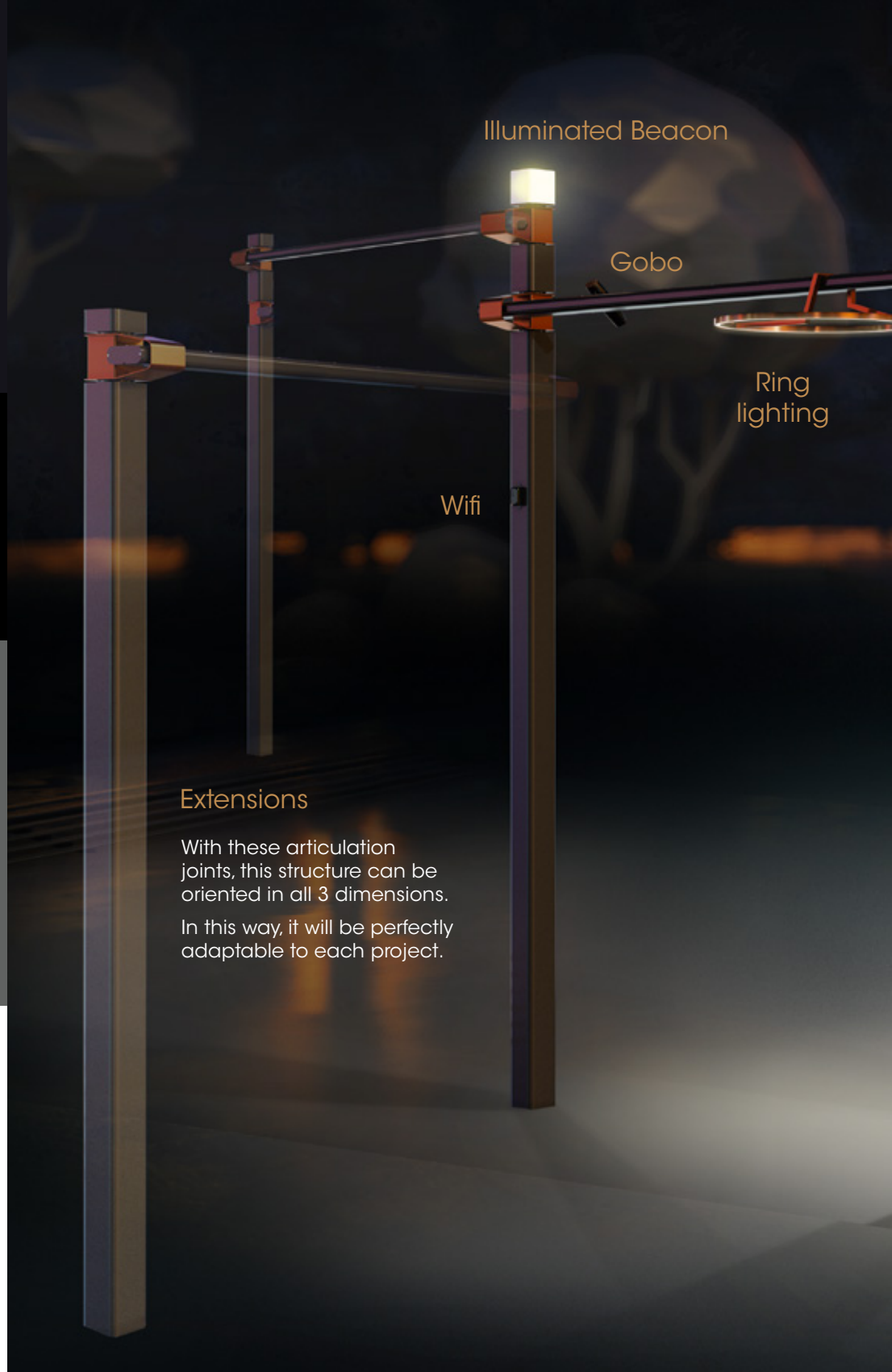
Versatility

Variable height from
3.5m to 5m
Several functional
modules available to
compose your project

Night Lounge can be customized
to suit your project perfectly.
Whether in length, height, colour,
light module and much more, let
your imagination run wild in order
to recreate a warm and welcoming
place to live while preserving the
biodiversity without ever altering
the environment.

Thanks to its upgradeable concept,
our infrastructure is ready for the
future, allowing additional modules
to be added and even extending
the product to suit your application.

Taking into consideration the
eco-design aspect, Night Lounge
incorporates a virtuous circle of re-
use and a sustainable DNA.



Illuminated Beacon

Gobo

Ring
lighting

Wifi

Extensions

With these articulation
joints, this structure can be
oriented in all 3 dimensions.

In this way, it will be perfectly
adaptable to each project.

Communication
Control

Linear
lighting

Floodlights

Camera

Suspended
lighting

Birdhouse

Environmental
sensor

Soft mobility plug

USB charging
station

Know-how & Customization



Ragni internalizes all skills that make the quality of its products: engineering, development, laboratory testing, manufacturing, logistics... These in-house services allow Ragni to respond in record time to our customer requests.

From the initial concept to the final design of the luminaire, Ragni's teams ensure its creation through their qualifications. Each luminaire is designed in compliance with the environmental criteria of energy efficiency, recyclability and interoperability.

R&D, CONCEPTION & DESIGN

DEVELOPEMENT

TECHNICAL STUDIES

MARKETING & COMMUNICATION





OPTICAL, MECHANICAL & THERMAL
DEVELOPMENTS

PHOTOMETRIC AND ENERGETIC STUDIES

TESTING / LABORATORY / SIMULATION

QUALITY / CUSTOMER SERVICE

MARKETING / COMMUNICATION /
VIDEO / PROMOTION

CUSTOMIZATION

By essence, Salons Nocturnes are customized products. By allowing you to adjust its structure to your project, and add options according to your needs, it will meet your exact requirements.



With the option of adding lights from the Ragni suspension product range, you can install customizable products such as the Lampion solution, where custom laser-cutting will stimulate your creativity.

Standard versions

We've created 3 standard versions to inspire you. From the simplest version in the shape of an arch with a light line to a version with 4 vertical columns.

Those versions can completely be customised: colour, linear lighting, circular lighting and functional modules.

The Arche Night Lounge is ideal for lighting a straight line such as a bench beside a watercourse, a bus stop or any other specific applications.

Technical specifications:

Dimensions:
Width 3,25 m, Height 3,86 m

Performance:

Flux (lm)	Power (W)	Eff (lm/W)
11421	120	95

Model 1





The version with 3 verticals can be used to define an angle and can therefore be used in the corner of a square or an area. This can create a geographical boundary.

Technical specifications:

Dimensions:

Width 6,25 m, Height 4,37 m

Performance:

Flux (lm)	Puissance (W)	Eff (lm/W)
-----------	---------------	------------

22842	238	96
-------	-----	----

Model **2**

Standard versions

The most complete standard version consists of 4 verticals. It can be adapted along a pathway to highlight the architecture and landscaping of a site. Fully adjustable on one axis, it will meet your demands.

Technical specifications:

Dimensions:
Width 9,25 m, Height 4,37 m

Performance:

Flux (lm)	Puissance (W)	Eff (lm/W)
34263	357	96

Model 3





Lighting propositions

This elegant structure provides different types of lighting to suit the desired ambience and function, which can be both functional and warm. These lights are all respectful of the biodiversity

Its luminous line provides functional lighting while limiting glare, thanks to its size adapted to your needs. A round version that can be fixed to the horizontal or to the vertical bar is available. This shape provides roundness and comfortable feeling.

Lastly, most of Ragni suspended luminaires can be added to this structure, providing continuity of design as well as functional, elegant and personalised lighting.

Ring lighting

With its circular design, the ring not only adds roundness to an urban setting.



Surface-mounted

Suspended



Technical specifications:

Diameter : 0,8 / 1 m

Material: Aluminium

Optical protection material: Silicone

Protection class: IP65

Shock resistance index: IK08

Lifetime: L90 B10 100 000 h

Performance:

	Flux (lm)	Power (W)	Eff (lm/W)
0.8 m	2240	38	59
1 m	2740	46.4	59

Color temperature:

2200 K / 2700 K / 3000 K / White control

Suspended Ragni luminaires

A selection of suspended luminaires from the Ragni range are compatible with the Night Lounge to vary the possible configurations and personalize your project.

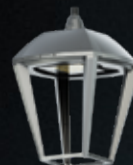
Compatible fixtures:



LAMPION
mini



EMBLÈME



URBANE



MARGO Mini & Mega



ATINIA SLIM
6600



CIRKO
suspendu



AVA
suspendu



Linear lighting

Providing a rectilinear design in a natural or urban environment, this line of light, which can reach up to 5m between 2 columns, will blend in perfectly and fulfill its main function.

Technical specifications:

Length: 0,5 / 1 / 1,5 / 2 / 2,5m

Material: Stainless steel

Optical protection material: Diffusing PMMA

Protection class: IP66

Shock resistance index: IK08

Lifetime: L90 B10 100 000 h

Dimming: 0 - 100%

Performance:

	Flux (lm)	Power (W)	Eff (lm/W)
0.5 m	2284	26	90
1 m	4568	49	93
1.5 m	6853	73	94
2 m	9137	96.3	95
2.5 m	11421	119.7	95

Color temperature:

2200K / 2700K / 3000K / White control

Lighting propositions

IRYS floodlights

Available in two versions, it has an IP66 aluminium body and an IK08 tempered glass finish. Irys mega can accommodate up to 3 COB LEDs when Irys mini integrate one. Wall-mounted or on a pole, it offers a tilt range from +10° to -108° and 360° rotation. With a range of accessories to modify its functionality and/or modulate its projection, the Irys offers both original and nuanced lighting designs, thanks in particular to its different light distributions, a wide variety of colour temperatures and the possibility of RGBW lighting.



IRYS Mega

Technical specifications:

Material: Aluminium

Optical protection material: Verre trempé

Protection class: IP66

Shock resistance index: IK08

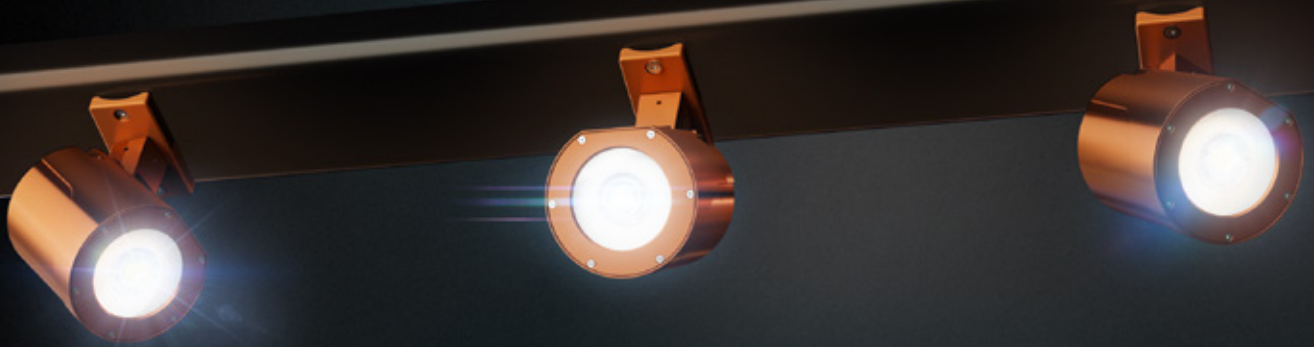
Lifetime: L90 B10 100 000 h

Color temperature:

2200K / 2700K / 3000K / 4000K

Performance:

- From 1000 to 6000lm
- Power : up to 56W
- Efficacy : up to 111 lm/w



IRYS Mini

Technical specifications:

Material: Aluminium

Lifetime: L90 B10 100 000 h

Optical protection material:
Tempered glass

Color temperature:
2200 K / 2700K / 3000K / 4000 K

Protection class: IP66

Shock resistance index: IK08

Performance:

- From 1000 to 2700lm
- Power: up to 29W
- Efficacy : up to 100lm/w

Illuminated Beacon

A visual landmark at night - can be controlled synchronously with the other modules and offers virtually infinite colour variation thanks to RGBW with DMX control or fixed-colour LEDs.

Gobo projector

The Gobo projector offers differentiation through light. Project customised light patterns, texts or logos in full colour under the structure of the Night Lounge.



Communication & Biodiversity

Night Lounge can interact with the outside world in a number of ways.

Wifi access, sound solution with a loudspeaker module, lighting management solution and the possibility to change the colour temperature of the lighting to adapt the atmosphere are just some of the features that make this structure a place of well-being for all users, while respecting the flora and fauna.

Wi-Fi

As real communications tools, the Wi-Fi module can be installed on top of the Night Lounge. It enables Internet access via Wi-Fi and adds an additional access solution to your existing network.

Wi-Fi access point:

- Client with two internal antennas (MIMO)
- IEEE 802.11 a/b/g/n 2.4 GHz and 5GHz up to 300MBit/s
- RJ45: for LAN, Web, http/https
- Transmission speed: 10/100MBit/s
- Functions : Access point / client adapter / repeater

Loudspeakers

Turn your Night Lounge into a sound system by adding 1 or more loudspeakers. Whether it's providing a musical ambience or relaying information, your column complements its qualities with an active function, allowing users to enjoy the city's infrastructure in a different way.

Technical specifications:

- IP65
- Maximum power: 50W
- Nominal impedance: 4Ohm
- Frequency response: 90 - 19000 Hz
- Main sound level: 90 dB (1 W/1 m)



Remote control management

Thanks to its several management and control options, you can adapt the light to your need.

This system allows lighting to be turned ON only when necessary, and is a real solution to save energy and preserve biodiversity. By adding an Outdoor lighting control which can be via Zhaga socket, Nema socket, or without socket you can control and adapt luminaires from your laptop.

More informations on sev-e.com:



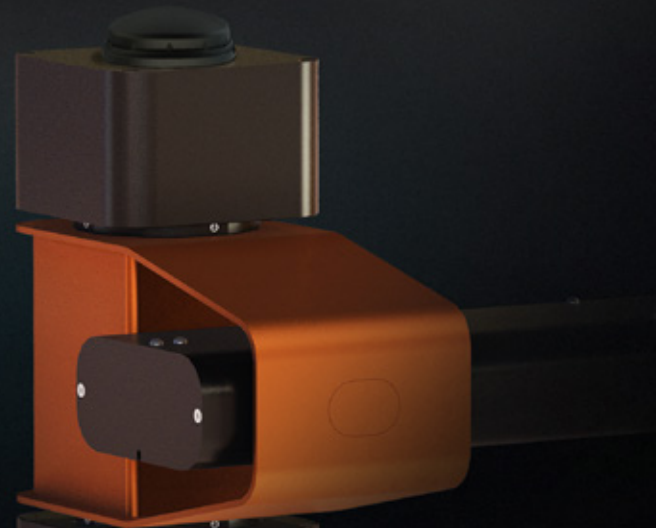
We also offer sensors allowing to turn ON the Night Lounge only when necessary to preserve as much as possible the dark sky and the biodiversity.

Detection, dimming, time delay, train of light: Night Lounge are a durable solution that responds to the user's needs.

- Driver control according to DALI protocol
- 1 or 2 180° motion sensors

Birdhouse

The Birdhouse is designed to accommodate small birds such as sparrows. Designed in collaboration with a wildlife conservation association, the diameter of the entrance hole and the internal volume of the «letter-box» type Birdhouse have been calculated to allow birds to pass through without allowing predators access. With nesting sites becoming increasingly rare, the birdhouse can be used both in the city and in the countryside, and contributes to biodiversity.



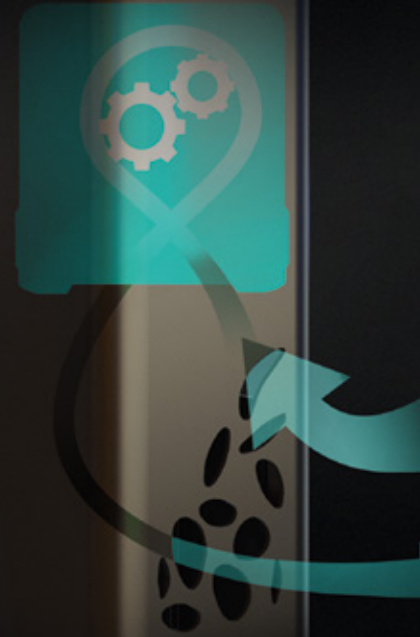
Control & Measurement

Night Lounge is ideal to help monitoring, to provide a sense of security thanks to its camera, and also to recharge your smartphones, soft mobility and much more.

Environmental sensor

The environmental sensor adds air quality monitoring function to the Night Lounge. It collects environmental data and enables the passage between raw data and operational information through a software platform.

- Dashboard with key indicators
- Advanced data processing and analysis
- Real-time customized alerts
- Advanced and expert reports
- API integration with third-party smart city platforms



HDTV Camera

Add an HDTV camera to your video surveillance system from our selection or take advantage of our technical advice to define compatibility with your proprietary security equipment.

Camera built-in 180°

- Zoom: zoom and remote focus
- Horizontal field of view: 92° - 34°, vertical: 50° - 20°.
- Protection rating: IP66
- Impact resistance: IK10

360° remote camera

- Zoom: 23x/32x optical
- Angle of coverage: Continuous pan 360°
- Protection rating: IP66
- Impact resistance: IK10
- Excellent light sensitivity, video analysis.

180° surface-mounted camera

- Zoom: zoom and remote focus
- Horizontal field of view: 92° - 34°, vertical: 50° - 20°.
- Protection rating: IP66
- Impact resistance: IK10



Charge

USB charging station

The USB charging station, accessible to all, with 2x2 backlit ports and two places for smartphones, can be integrated into the stand and makes the Night Lounge a relaxing stopover during a break or while you're on the move.

Slow down, plug in and connect !

- Input 24V DC
- Output 5V 2.1 A max DC

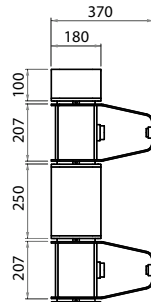
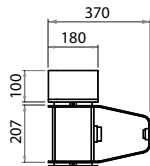
Soft mobility plug

The socket for soft mobility vehicles accessible to all is integrated into the terminal's feet of the Night Lounge to recharge bicycles, electric scooters, etc.

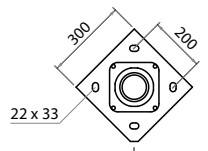
- 250V - 16 A - 2P + T
- Residual Differential device (RDD) 30 mA
- Cover with locking ring. When the cover is open, in or out of connection, the plug is IP55. When the cover is closed and the ring is locked, the plug is IP66/67.

Technical & mechanical data

Articulations

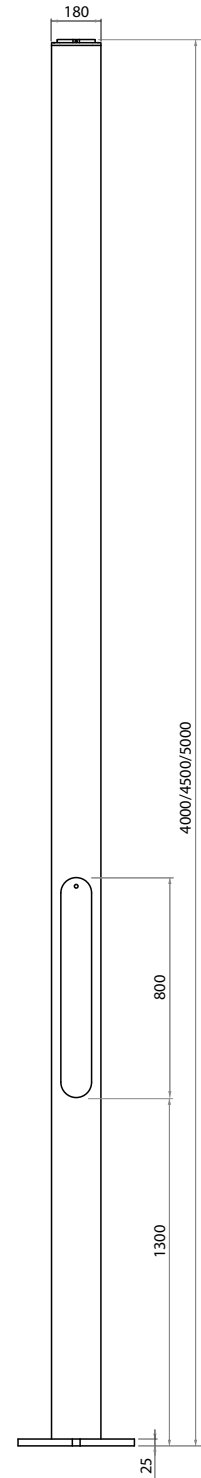
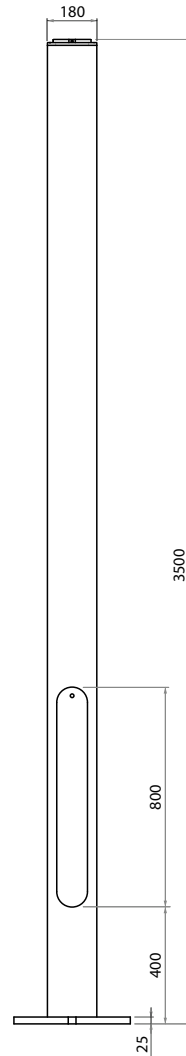


Flange



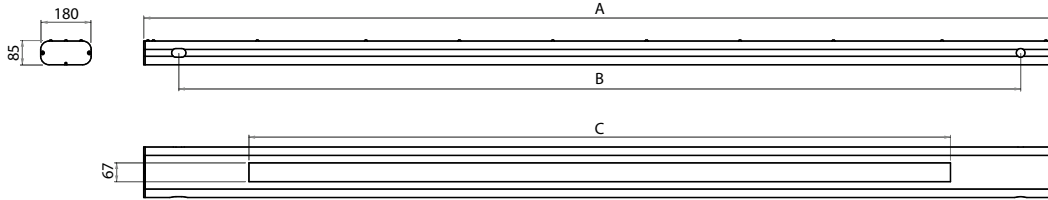
Biseau de repérage côté porte

Vertical line



Horizontal line

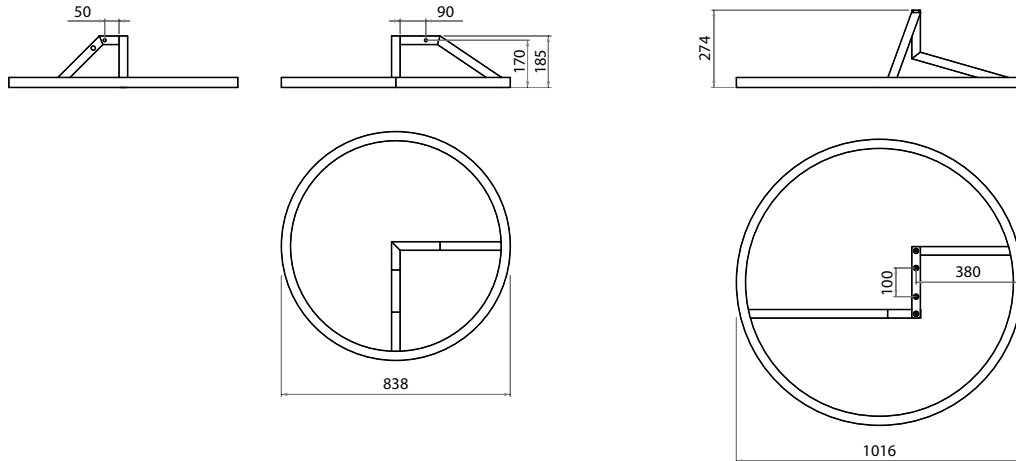
A	B	C	Width luminaire (mm)
Total length	Centre-to-centre mounting (mm)	Length luminaire (mm)	
1250	1000	500	
2250	2000	1500	
3250	3000	2500	67
3750	3500	2 x 1500	
4750	4500	2 x 2000	
5750	5500	2 x 2500	



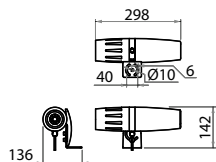
Ring light

Small model

Large model



GOBO





RAGNI

GRUPE RAGNI

RAGNI SAS

CHEMIN DU VALLON DES VAUX - LE GUEIRARD

CS 80002 06801 CAGNES CEDEX - FRANCE

Tél. : +33 (0)4 93 31 05 48

e-mail : info@ragni.com



NOUS SOUTENONS
LE PACTE MONDIAL



WWW.RAGNI.COM

